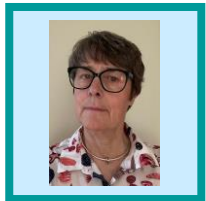


## Who else can support my child?

- GP
- Just One Norfolk Number (Health)
- Norfolk & Waveney - Speech & Language
- Norfolk County Council SEND Local Offer
- Norfolk SEND Partnership SENDIASS
- Sensory Support Team
- Educational Psychologist
- Schools' Mental Health Support Team & CAMHS



Liz Clark  
SENCo



Sue Magee  
Pastoral Lead

## Links

- [School Website](#)
- [School Website \(Inclusion/SEND\)](#)
- [Norfolk SEND Local Offer](#)
- [Norfolk SEND Information, Advice and Support Service \(NSIASS\)](#)



## PARENTAL COMMENTS

"All staff are very welcoming."

"Any concerns I have are met with a quick response."

"Staff are always available to listen."

"They probably know my child better than I do."

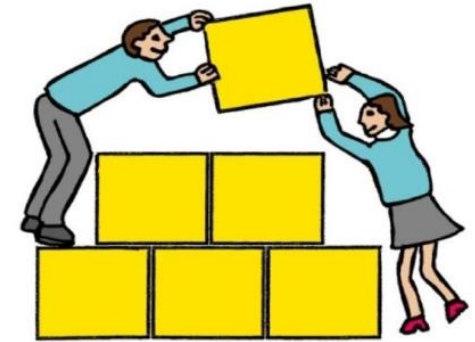
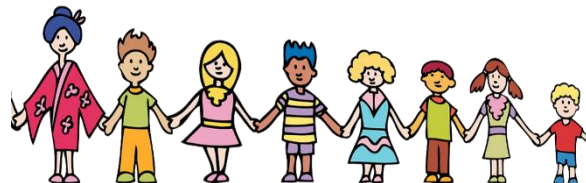
## PUPIL COMMENTS

"I like working in our school."

"I love school."

"All staff help me."

"I can talk to anyone when I need to."



BRIEF  
SPECIAL  
EDUCATIONAL  
NEEDS &  
DISABILITY  
(SEND)  
INFORMATION  
REPORT  
2024-2025





### How does the school identify and review my child's needs?

- Discussion with pupil, parents, and outside agencies
- Use of pupil and parent passports
- Analysis of Y2 assessments and discussions with Y2 teachers
- Salford Word reading tests & Single Word spelling tests twice yearly
- Accelerated Reader quizzes and tests
- Boxall SEMH assessments
- Comprehension and maths tests - termly



### What types of support are available for my child?

- Adjustment as part of high-quality class teaching
- Support through targeted small group intervention
- 1-1 interventions run by school staff or outside agencies

These interventions may be academic or pastoral depending upon need.



### Who should I talk to about my child's learning needs?

- Class teacher
- SENCo - Liz Clark
- Pastoral Lead - Sue Magee
- Headteacher - Matt Walton
- SEND Governor - Hayley Stockwell

For more details see our [SEND School Information Report](#) alongside other relevant policies.



### How will my child be included in school life?

- Year 2/ 3 transition activities
- Year 3 new parents meeting
- Tour of the school
- 'Meet my new teacher' morning
- 'My New Class' information sheets
- Links with feeder Infant schools and local High schools to manage transition
- Break, lunch and after school clubs
- Regular staff training in response to pupils' needs

### How does school communicate with parents?

- Home/School journal
- Monthly newsletter
- Website/Text/Marvellous Me
- Review meetings with class teacher, pastoral staff and/or SENCo
- Parents evenings - Pupil Passports
- Information sessions
- Meetings with Outside Agencies
- Annual report and Assess Plan Do Review if applicable

